

# FHT3300 series

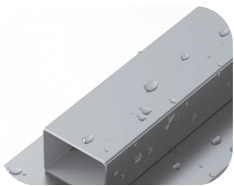
Removable full height turnstile



ZKTeco's FHT3300 series is a modular design full height turnstile and the angle of the arms are 120 degrees, it is very comfortable for people pass through. FHT3300 series provide a high security level.

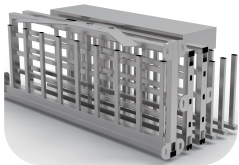
It is often used in the situations without security guard.

## Features



### **Durable**

- SUS304 stainless steel material used for whole device,



### **Modular**

- rotating shaft with modular design, easy to install and maintenance.



### **Security**

- good anti-tailgating ability, one time can only pass one person.



### **Safety**

- emergency case happened turnstile automatically unlock, people can push open.



## Convenient

- both side have LED indicator light to guide people pass though.

## Specifications

Model	FHT3300
Power requirements	AC110V/220V, 50/60Hz
Working temperature	-28°C to 60°C
Working Humidity	0% to 95% RH (non-condensing)
Working Environment	Indoor/ Outdoor
Speed of Throughput	Maximum 20/ minute
Lane Width	550mm
Footprint(L*W)	1470*1382.5mm
Dimension (L*W*H)	1470*1382.5*2182mm
Dimension with Packaging(L*W*H)	1200*2100*1200mm
Net Weight(Kg)	260kg
Gross Weight(Kg)	300kg
Cabinet Material	SUS304(Option SUS316)
Barrier Material	SUS304(Option SUS316)
Barrier Movement	Rotating
Emergency mode	Supports
Security level	High
MCBF	1 million
Ingress Protection	IP54
Warranty	1 year

## Dimension(mm)

